

ITEM NO.	PART NO.	DESCRIPTION	QTY.
1	PH715-36	sol hose, 3/8", silicone braided, clear	2
2	H347	clamp, hose, 5/16-29/32	4
3	B241	adapter, brass, 3/8" barb x 1/4"mpt	3
4	B136	elbow, brass, 90 deg, 1/4" mpt x 1/4" mpt	4
5	C313C	regulator, 450 psi, silver spring	1
6	B208	coupling, 3/8" fpt x 1/4" fpt	5
7	H185	screw, 10-32 x 1 1/4", phil flat full thread	4
8	H044	bracket, regulator, panel mount	1
9	H273	nut, kep, #10-32 zinc	14
10	H304	screw, #8 x 5/8 phil oval, s/s	14
11	H296	guard, cooling fan, wire	2
12	H186	screw, 10-32 x 3/4, phil, flat, countersunk, s/s, black	2
13	H632	plate, mounting, relay switch, dual circuit indicator	1
14	E564	controller, circuit light, audible	1
15	H146	nut, lock, 8-32, nylon insert	2
16	H792	nut, lock, 6-32, nylon insert	3
17	E632	relay, shut-off switch, mechanical float, 115v	2
18	H216	nut, lock, 1/4-20, nylon insert, s/s	10
19	H210	washer, 1/4" flat, s/s	22
20	H342	bolt, 1/4-20 x 1" hex head, s/s	12
21	H668	caster, 4", black hub & gray tread	2
22	H371	axle, 18.03" x .50" dia	1
23	H254	washer, axle, cut 1/2" id	10
24	H109	wheel, 10", foam filled	2
25	H042	c-clip, 12mm, external	2
26	H256	screw, 10-32 x 3/4" phil pan head	6
27	E360	flanged male inlet recaptacle, 230V, 20A	2
28	P731	base	1
29	B207	elbow, brass, 90 deg, 1/4" fpt x 1/4" fpt	1
30	AH156	hose, 3/8" x 6.5", (OAL), f x fsw, 5400 Gray	1
31	B103	elbow, 90 deg street, 1/4"mpt x 1/4" fpt	8
32	H230	screw, 10-32 x 1/2" phil pan head, s/s	6
33	B142A	coupling, brass, 1/4" fpt x 1/4" fpt	2
34	H528	bracket, heater mounting, dual	1
35	H903A	heater, aluminum cast, single	2
36	E574	Thermostat, 310°F ± 10°F, Manual, 1/4"	2
37	E573	Thermostat, 200°, Auto, 1/4"	2
38	H274	screw, 6 x 3/16, phil pan head, self-tapping	10
39	E519	heating rod, 1000W, 115V	1
40	E571	heating rod, 600W, 115V	1
41	AH124	sol hose, pulse, 3/8" x 15", 1/4" msw x 1/4" msw	2
42	B160	adapter, brass, 1/2" barb x 3/8" fsw, ball end	1
43	PH615-36	sol hose, 1/2" kuri 100psi	1
44	B644	barb, 1/2" barb x 1/4" mpt	1
45	C342	pump, 800psi	1
46	B127	plug, brass, 1/4"mpt, hex	1
47	H215	nut, hex, 1/4-20 s/s	6
48	H770	bolt, 1/4-20 x 1/2" serrated hex flange, zinc	8
49	H912	bracket, rear, fb/spy	1
50	H124	Cuff-Lynx, 2" mpt x 2" female cuff	2
51	H194	coupler, 2" dia x 2.5" length, s/s	2
52	H217	clamp, hose, 2-1/4 dia	4
53	PH628-20	vac hose, 2", wire reinforced	2
54	P732	sol tank, speedster	1
55	H390A	bracket, "L", 2" x 2"	2
56	H178	faucet fill	1
57	G018	cover, sol tank (sp)	1
58	H203	bolt, 1/4-20 x 1-1/4"	2
59	H211	washer, 1/4" id x 1" od, flat, s/s	6
60	G052	washer, buna 1-1/8" od x 3/16" id	6
61	H213	washer, 1/4" lock, s/s	10
62	H768	bolt, 1/4-20 x 3/4" serrated hex flange, zinc	2

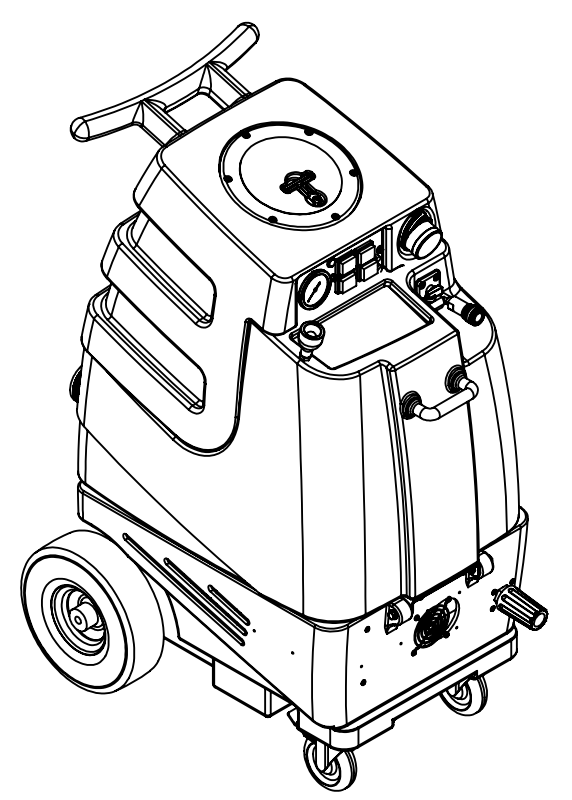
ITEM NO.	PART NO.	DESCRIPTION	QTY.
63	H485	handle, aluminum grip, black	1
64	AH206	sol hose, 1/4" x 28", 1/4 msw x 1/4 mpt	1
65	H484	plate, mounting, QD	1
66	B135	tee, 1/4" mpt x 1/4" mpt x 1/4" mpt	1
67	B102	quick disconnect, 1/4" fqd x 1/4" fpt	1
68	B656	valve, ball, 1/4" fpt x 1/4" fpt, s/s	1
69	B109	barb, 1/4" barb x 1/4" mpt	1
70	B170	ferrule, 1/4" brass	1
71	PH634-36	sol hose, 1/4", 300 PSI	1
72	H316	bolt, 1/4x1-1/2", hex head zinc	2
73	H378	bracket, front hinge, sp/fb	1
74	H201	bolt, 1/4-20 x 1/2", hex head, zinc	2
75	H212	flat washer, 9/16"ID x 1 1/16"OD, AN960-C916	5
76	B107	nipple, hex, 1/4"mpt x 1/4"mpt	2
77	B119	filter, strainer, 1/4"	1
78	B186	elbow, 90 deg street, 3/8"mpt x 3/8" fmpt	1
79	H299	washer, 11/16" id x 1-1/2" od x .075, s/s	3
80	B216	nipple, brass, 3/8" x close	1
81	B210	bushing, brass, 1/2"mpt x 3/8" fpt, hex	1
82	B119A	filter, strainer, 1/2" fpt	1
83	H314	nut, lock, 1-1/2", steel	2
84	P520	adapter, 1.5" mpt pvc	2
85	PH633-2.5	pipe, pvc, 1-1/2"	4
86	P503	adapter, 1.5" pvc, 45 deg, fslip	4
87	PH633-6.5	pipe, pvc, 1-1/2"	2
88	P502	adapter, 1.5" pvc, fslip x fslip	2
89	G097	filter, screen mesh, 1.90" dia	2
90	G003	filter, foam, 2", vac stack, 1/2"	2
91	PH633-.1	pipe, pvc, 1-1/2"	2
92	H226	spout, drain, 45 degree	1
93	H225	valve, drain, 1-1/2"	1
94	P733	vac tank, speedster	1
95	A926	elbow, inlet assembly 2"	1
96	G091	gasket, 7", vac lid	1
96	G090	lid, vac tank, clear, 7"	1
98	H135	Cuff-Lynx, 2" m cuff x 2" mpt	1
99	E512B	light, indicator, blue	1
100	H337	plate, switch, 1003DX, 1005DX	1
101	E511	light, red, 250v	2
102	E515	switch, rocker, 2 position	3
103	E516	switch, rocker, 3 position	1
104	H389	screw, 10-32 x 1/2" SHCS, alloy	1
105	H289	washer, 10 flat, s/s	1
106	H612	waasher, #8, flat regular	2
107	H246	screw, 8-32 x 3/8" SHCS, alloy, Black	2
108	H308D	gauge, pressure, 2000 PSI	1
109	AH117	sol hose, pulse, 3/8" x 49", 1/4" fsw x 1/4" fsw	1
110	B113	tee, 1/4" fpt x 1/4" fpt x 1/4" fpt	1
111	E373	level switch, vacuum shut-off, rear threads	2
112	H503	vac support, 3 stage, 3.25", no thrds	6
113	H096	bolt, hex, 1/4-20 x 4", zinc Finish	6
114	C302LA	vac motor, 3 stage, low amp	2
115	G004	gasket, vacuum motor	2

**ITEMS NOT SHOWN**

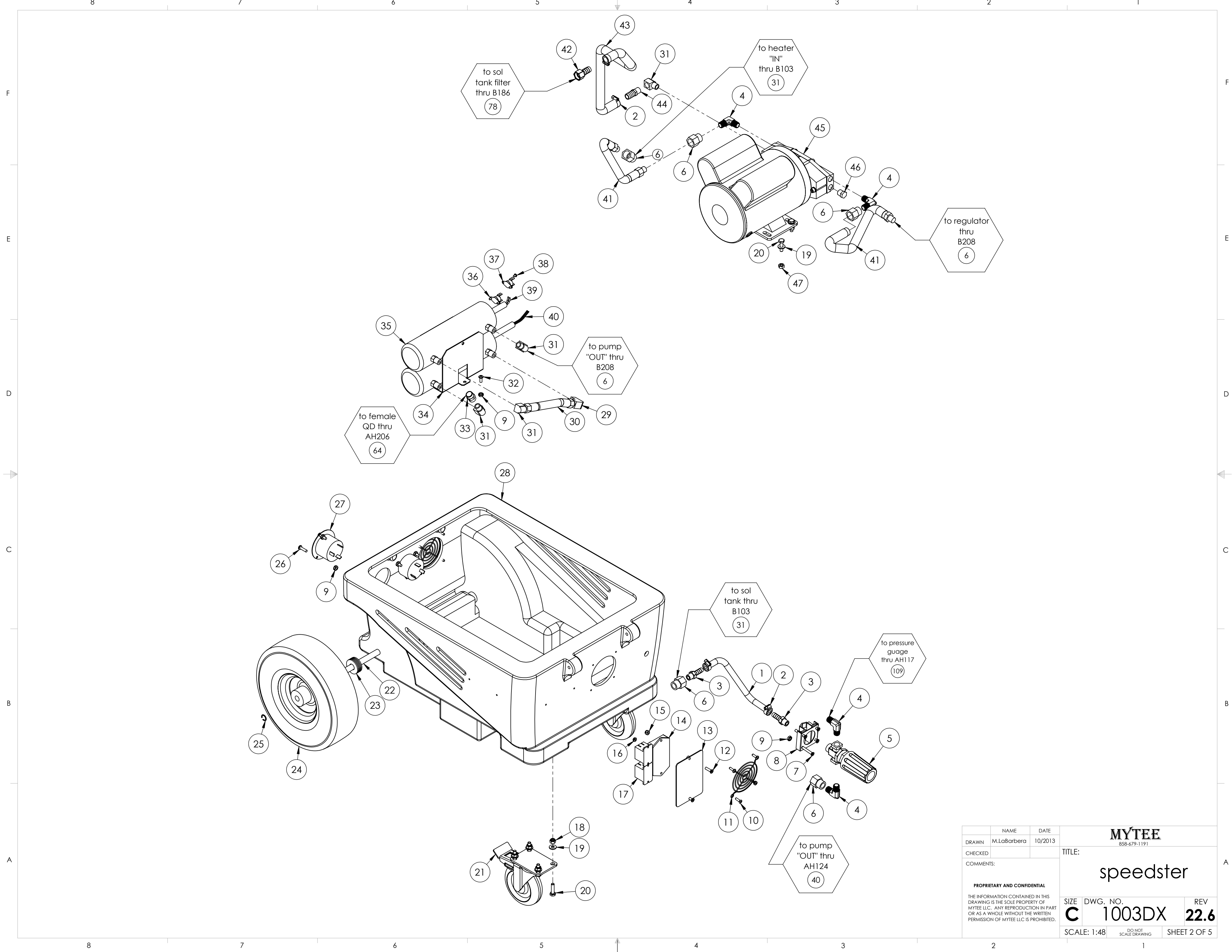
PART NO.	DESCRIPTION	QTY.
E380	harness, electrical	1
G008	piglet filet	1
H141	Cuff-Lynx, 2" to 1.5" reducer	1
E351A	power cord, ext 50', 12/3, twist lock, sjtw solid jacket	2
H110	Cuff-Lynx, 2" hose x 2" fem swivel Cuff-Lynx	1
P568A	cord lock, s-type	2
ADM-SPEEDSTERS	manual, speedsters	1

**COMPONENT ASSEMBLIES**

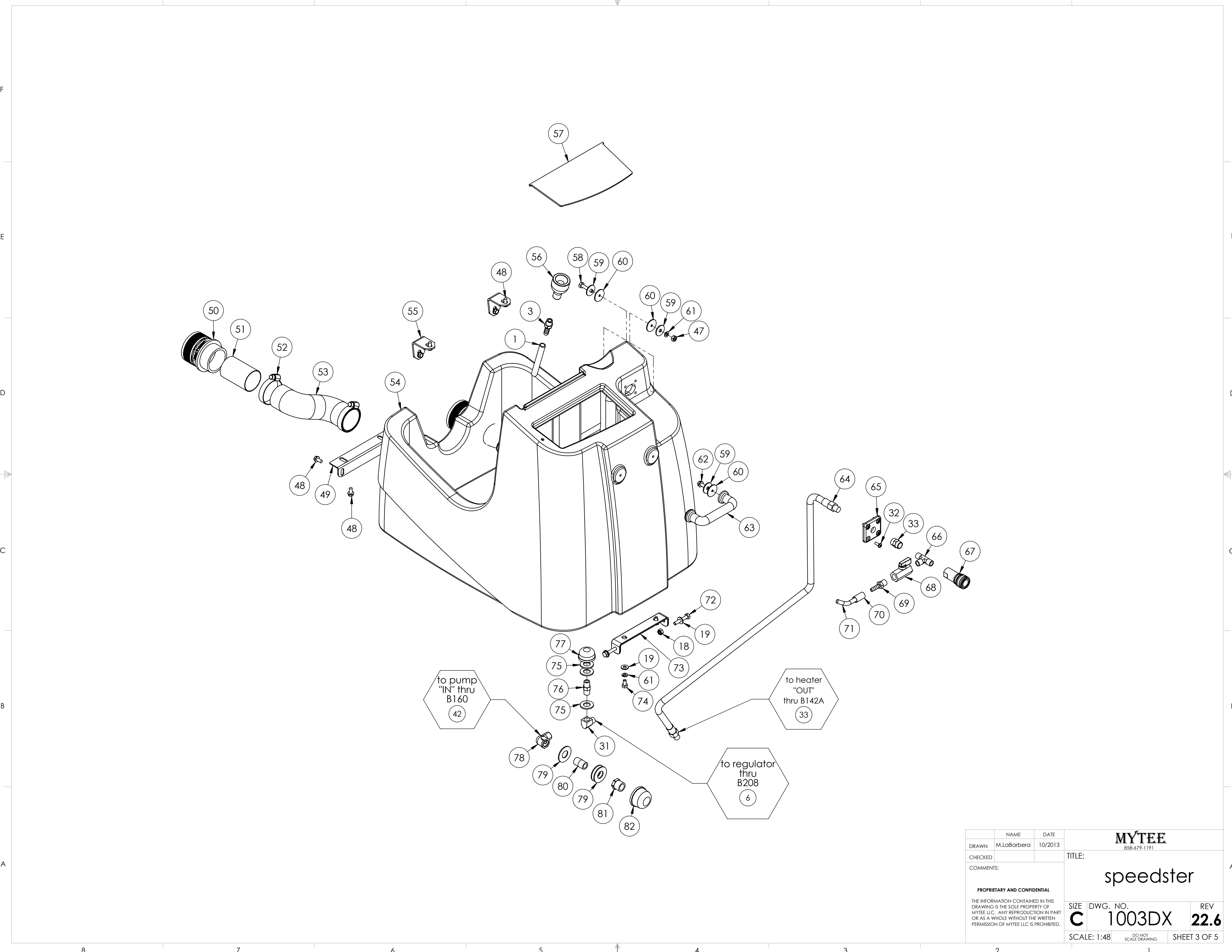
ITEM NO.	PART NO.	DESCRIPTION	QTY.
	<b>A908</b>	<b>heater assembly, 1600w, 115v</b>	<b>1</b>
32	H093A	heater, aluminum cast, single	2
38	E571	heating rod, 600W, 115V	1
34	E574	Thermostat, 310°F ± 10°F, Manual, 1/4"	1
35	E573	Thermostat, 200°, Auto, 1/4"	1
37	E519	heating rod, 1000W, 115V	1



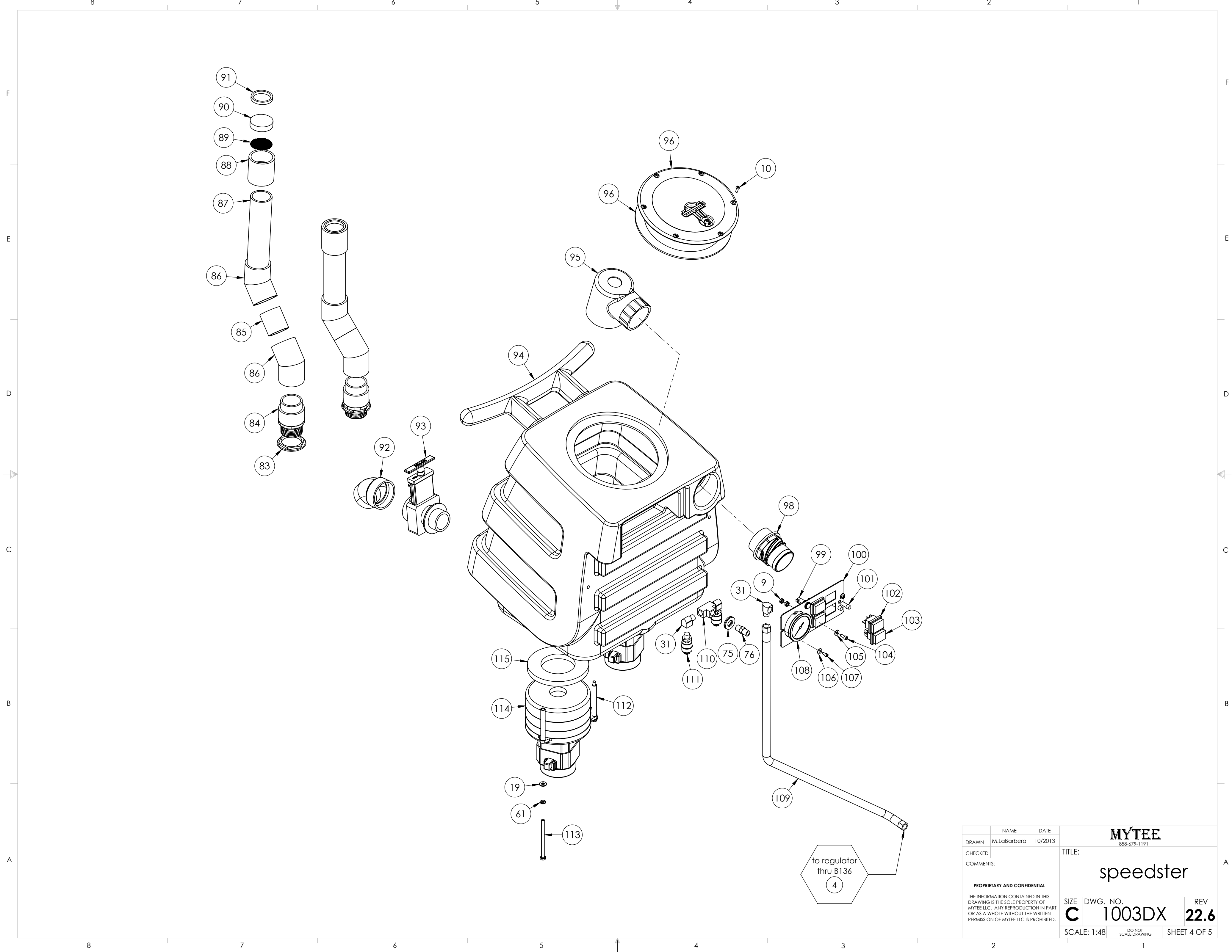
NAME	DATE	<b>MYTEE</b>	
DRAWN V. LaBarbera	10/2013		
CHECKED		TITLE:	
COMMENTS:		<b>speedster</b>	
<small>PROPRIETARY AND CONFIDENTIAL THE INFORMATION CONTAINED IN THIS DRAWING IS THE SOLE PROPERTY OF MYTEE, LLC. ANY REPRODUCTION IN PART OR AS A WHOLE WITHOUT THE WRITTEN PERMISSION OF MYTEE, LLC IS PROHIBITED.</small>		SIZE DWG. NO. REV <b>C 1003DX 22.6</b>	SCALE: 1:48 DO NOT SCALE DRAWING SHEET 1 OF 5



	NAME	DATE	<b>MYTEE</b> 858-679-1191		
DRAWN	M.LaBarbera	10/2013			
CHECKED			TITLE:		
COMMENTS:			speedster		
<small>PROPRIETARY AND CONFIDENTIAL</small> <small>THE INFORMATION CONTAINED IN THIS DRAWING IS THE SOLE PROPERTY OF MYTEE LLC. ANY REPRODUCTION IN PART OR AS A WHOLE WITHOUT THE WRITTEN PERMISSION OF MYTEE LLC IS PROHIBITED.</small>			SIZE	DWG. NO.	REV
			<b>C</b>	<b>1003DX</b>	<b>22.6</b>
SCALE: 1:48			DO NOT SCALE DRAWING	SHEET 2 OF 5	



	NAME	DATE	<b>MYTEE</b> 858-679-1191	
DRAWN	M.LaBarbera	10/2013		
CHECKED			TITLE:	
COMMENTS:			speedster	
<small>PROPRIETARY AND CONFIDENTIAL</small> <small>THE INFORMATION CONTAINED IN THIS DRAWING IS THE SOLE PROPERTY OF MYTEE LLC. ANY REPRODUCTION IN PART OR AS A WHOLE WITHOUT THE WRITTEN PERMISSION OF MYTEE LLC IS PROHIBITED.</small>			SIZE	DWG. NO.
			<b>C</b>	<b>1003DX</b>
			SCALE: 1:48	REV
			DO NOT SCALE DRAWING	<b>22.6</b>
			SHEET 3 OF 5	

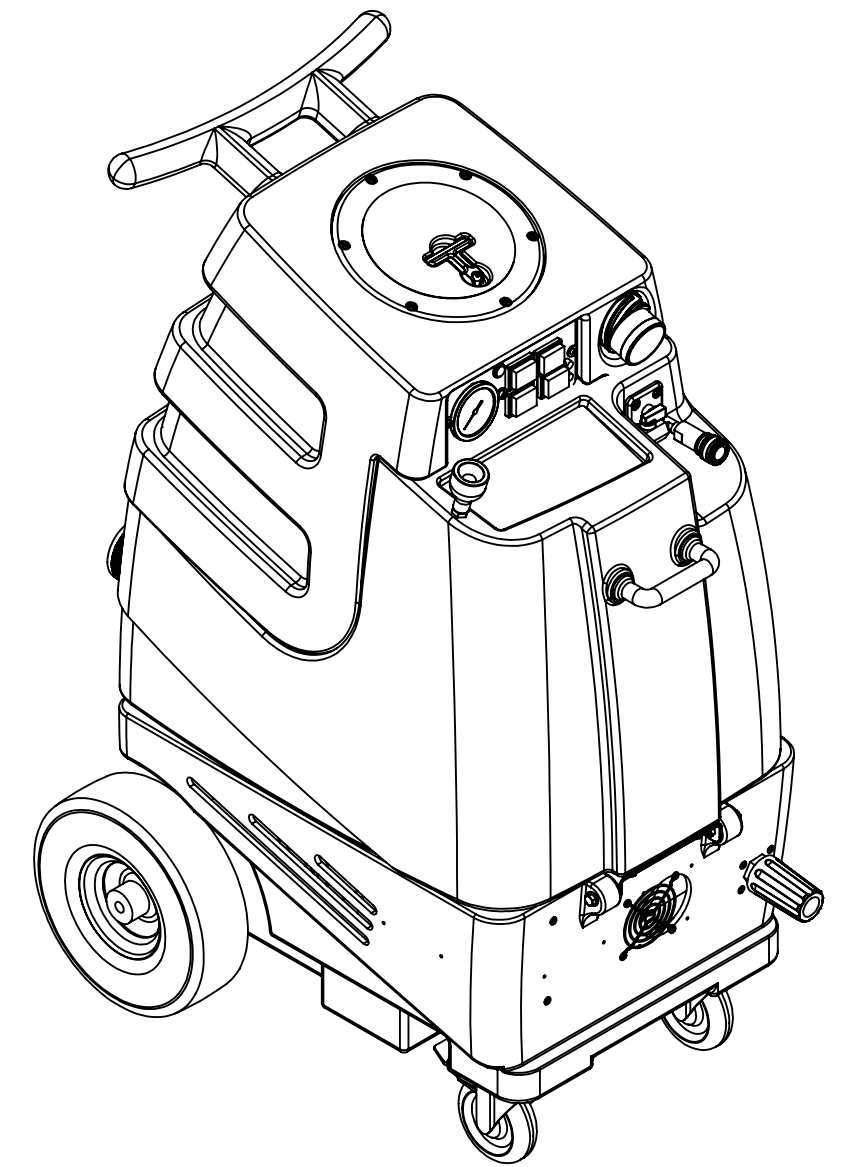


	NAME	DATE	<b>MYTEE</b> 858-679-1191	
DRAWN	M.LaBarbera	10/2013		
CHECKED			TITLE:	
COMMENTS:			speedster	
<small>PROPRIETARY AND CONFIDENTIAL</small> <small>THE INFORMATION CONTAINED IN THIS DRAWING IS THE SOLE PROPERTY OF MYTEE LLC. ANY REPRODUCTION IN PART OR AS A WHOLE WITHOUT THE WRITTEN PERMISSION OF MYTEE LLC IS PROHIBITED.</small>			SIZE	DWG. NO.
			<b>C</b>	<b>1003DX</b>
			SCALE: 1:48	REV <b>22.6</b>
			<small>DO NOT SCALE DRAWING</small>	SHEET 4 OF 5

to regulator  
thru B136  
4

# REVISIONS

REV.	DESCRIPTION	DATE	APPROVED
OD	ORIGINAL DRAFT	-	JFL
A	REPLACED G003 W G022	8/2013	JFL
B	REPLACED H033 W H342, ADDED H210 & H216	10/8/2013	JFL
C	G021 REPLACED W G097	10/25/2013	JFL
D	REPLACED H219 W H042	8/8/2014	ML
E	REPLACED H347 W B170 & B173; G022 W G003	8/15/2014	ML
F	ADDED B241	4/16/2015	ML
G	REMOVED ELECTRONIC FLOAT	3/8/2016	ML
H	H668 REPLACES H666	5/23/2017	ML
22.6	AH206 REPLACES AH120	6/2022	ML



	NAME	DATE	<b>MYTEE</b> <small>858-679-1191</small>		
DRAWN	M.LaBarbera	10/2013			
CHECKED			TITLE:		
COMMENTS:			<b>speedster</b>		
<b>PROPRIETARY AND CONFIDENTIAL</b> <small>THE INFORMATION CONTAINED IN THIS DRAWING IS THE SOLE PROPERTY OF MYTEE LLC. ANY REPRODUCTION IN PART OR AS A WHOLE WITHOUT THE WRITTEN PERMISSION OF MYTEE LLC IS PROHIBITED.</small>			SIZE	DWG. NO.	REV
			<b>C</b>	<b>1003DX</b>	<b>22.6</b>
			SCALE: 1:48	DO NOT SCALE DRAWING	SHEET 5 OF 5